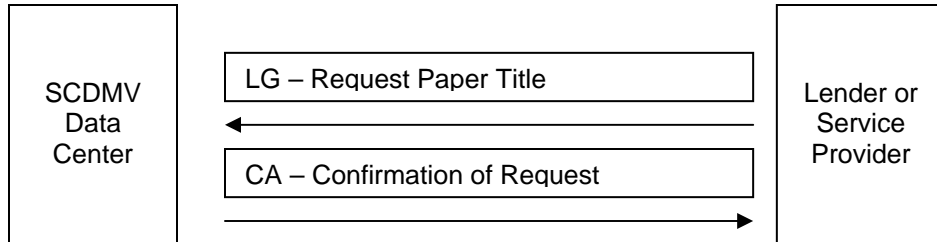


Request paper title:

Message Data Blocks and Required Data Elements

A message sent by the lienholder requesting DMV to print a title document (LG) for a vehicle in which they have an interest. If an error is detected, the 99/2 Edit/Error description block is added to the LG message and the message is returned to the lienholder.



Data Blocks and Required Data Elements

Network Control	Block 00/0	
TRAN-CODE	PIC X(04).	(Not used)
MSG-LENGTH	PIC 9(04).	MSG length
MSG-DESTINATION	PIC X(07).	(Not used)
MSG-ORIGIN	PIC X(07).	AAMVA mailbox of Lender
MSG-DATE	PIC X(06).	Current date
MSG-TIME	PIC X(06).	Current time
MSG-SEQUENCE-ID	PIC 9(04).	"0000" (incremented if more than 1 tx / sec)
APPL-ID	PIC X(02).	(Not used)
MSG-TYPE	PIC X(02).	"LG"
SEG-SEQUENCE-NO	PIC 9(02).	(Not used)
LAST-SEG-IND	PIC X(01).	(Not used)
TEXT-BLOCKS-COUNT	PIC 9(02).	Number of blocks
NETWORK-SESSION-IND	PIC X(01).	(Not used)
TEST-PROD-IND	PIC X(01).	(Not used)
TRANSMIT-MODE	PIC X(01).	(Not used)
ERROR-CODE	PIC X(01).	(Not used)
TRANS-ORIGINATOR	PIC X(07).	(Not used)
NETWORK-STATUS	PIC X(02).	(Not used)
APPL-STATUS	PIC X(01).	(Not used)
FILLER	PIC X(05).	

MESSAGE-EXCHANGE-CONTROL.	BLOCK (02/3)	
BLOCK-TYPE	PIC X(02).	"02"
BLOCK-SUBTYPE	PIC X(01).	"3"
BLOCK-LINENUM	PIC 9(02).	"01"
MSG-LOCATOR-HEADER	PIC X(26).	(Not used)
PROC-STATUS	PIC X(02).	(Not used)
MSG-MATCH-CNT	PIC X(02).	(Not used)
MSG-MATCH-IND	PIC X(01).	(Not used)
MATCH-LIMIT-EXCEEDED	PIC X(01).	(Not used)
MSG-MATCH-SEQUENCE-ID	PIC X(02).	(Not used)
JURISDICTION-CODE	PIC X(02).	(Not used)
CHNG-STATE-TITLE	PIC X(01).	(Not used)
CLEARI-TRANS-IND	NG PIC X(01).	(Not used)
RDF-IND	PIC X(01).	(Not used)
ACCEPTANCE-IND	PIC X(01).	(Not used)
FILLER	PIC X(02).	(Not used)
BATCH-NO	PIC X(15).	(Not used)
SW-VERSION-MODE	PIC X(01).	(Not used)
FILLER	PIC X(01).	(Not used)
EXPECT-MSG-ADJUSTMENT	PIC X(02).	(Not used)
VEHICLE-INFO	BLOCK (06/2).	
BLOCK-TYPE	PIC X(02).	"06"
BLOCK-SUBTYPE	PIC X(01).	"2"
BLOCK-LINENUM	PIC 9(02).	"01"
VIN	PIC X(30).	VIN of vehicle for loan
JURISDICTION	PIC X(02).	Spaces unless VIN assigned by SC
MAKE	PIC X(04).	Vehicle make
MODEL-YEAR	PIC X(04).	Vehicle year
CHG-REASON	PIC X(02).	(Not used)
VEHICLE-STATUS	PIC X(02).	(Not used)
VEHICLE-STATUS-DATE	PIC X(08).	(Not used)
VEHICLE-TYPE	PIC X(02).	(Not used)
VEHICLE-LENGTH	PIC X(06).	(Not used)
FILLER	PIC X(01).	(Not used)
RESPONSE STATISTIC BLOCK.	BLOCK (23/C)	NOT USED FOR LG
BLOCK-TYPE	PIC X(02)	RC: "23"
BLOCK-SUBTYPE	PIC X(01).	RC: "C"
BLOCK-LINENUM	PIC 9(02).	RC: "01"
NO-RECEIVED	PIC X(09).	RC: Number records received by lender
NO-ERROR	PIC X(09).	RC: Number records with error(s).
NO-PROCESSED-SUCCESS	PIC X(09).	RC: Number records processed OK.
NO-SENT	PIC X(09).	RC: (Not used)
RESERVED	PIC X(25).	
TITLE IDENTIFICATION DATA	BLOCK (26/2)	IGNORED FOR LG

BLOCK		
BLOCK-TYPE	PIC X(02).	"26"
BLOCK-SUBTYPE	PIC X(01).	"2"
BLOCK-LINENUM	PIC 9(02).	"01"
TITLE-NO	PIC X(17).	DMV title no
TITLE-ISSUE-DATE	PIC X(08).	DMV issue date
TITLE-TYPE	PIC X(01).	"1"
TITLING-JURIS	PIC X(02).	"SC"
TRANS-REASON	PIC X(02).	Spaces
TRANS-DATE	PIC X(08).	Spaces
TITLE-STATUS	PIC X(02).	"00"
STATUS-DATE	PIC X(08).	DMV issue date
TITLE-LIEN-INDICATOR	PIC X(01).	Spaces
TITLE-FROM-MCO	PIC X(01).	Spaces
JURIS-TRANS-TITLE	PIC X(01).	Spaces
TITLE-HELD-REASON	PIC X(02).	Spaces
TITLE-HELD-JURIS	PIC X(02).	Spaces
TITLE-OWNER-RELATION	PIC X(03).	"AND", "OR", etc
FILLER	PIC X(03).	Spaces
REGISTRATION DATA BLOCK	BLOCK (29/1).	(NOT USED IN LG)
BLOCK-TYPE	PIC X(02).	
BLOCK-SUBTYPE	PIC X(01).	
BLOCK-LINENUM	PIC 9(02).	
BLOCK-DATA	PIC X(61).	
LIEN-DATA	BLOCK (30/1).	
BLOCK-TYPE	PIC X(02).	"30"
BLOCK-SUBTYPE	PIC X(01).	"1"
BLOCK-LINENUM	PIC 9(02).	"01"
BLOCK-DATA	PIC X(61).	2 blocks 122 bytes defined below:
LIENHOLDER OCCURS 2 TIMES		
LIENHOLDER-ID	PIC X(16).	DMV assigned lienholder ID
LIEN-AMOUNT	PIC X(06).	(Not used)
LIEN-DATE	PIC X(08).	Lien date as record by DMV
LIEN-TIME	PIC X(06).	(Not used)
LIEN-FEIN	PIC X(09).	(Not used)
LIEN-EIN-SUFFIX	PIC X(02).	(Not used)
CHANGE-REASON	PIC X(02).	(Not used)
LIEN-RELEASE-DATE	PIC X(08).	(Not used)
LIEN-RELEASE-REASON	PIC X(02).	(Not used)
PAPER-REQ-REASON	PIC X(02).	(Not used)
LIENHOLDER-TYPE	OCCURS 2 TIMES PIC X(01).	(Not used)
FILLER	PIC X(12)	(Not used)
LIENHOLDER-NAME	BLOCK (30/2).	IGNORED FOR LG
BLOCK-TYPE	PIC X(02).	"30"
BLOCK-SUBTYPE	PIC X(01).	"2"
BLOCK-LINENUM	PIC 9(02).	"01"
BLOCK-DATA	PIC X(61).	
LIENHOLDER OCCURS 2 TIMES		

LIENHOLDER-NAME	PIC X(35).	
CHANGE-REASON	PIC X(02).	
LIENHOLDER-ID	PIC X(16).	
FILLER	PIC X(34).	
DEALER-NAME	BLOCK (35/1).	OPTIONAL, used for a "mail-to" address only.
BLOCK-TYPE	PIC X(02).	"35"
BLOCK-SUBTYPE	PIC X(01).	"1"
BLOCK-LINENUM	PIC 9(02).	"01"
BLOCK-DATA	PIC X(61).	Up to 7 blocks 427 bytes defined below:
DEALER-NAME	PIC X(35).	Name of entity receiving title by mail.
DEALER-CODE	PIC X(10).	(Not used).
DEALER-EIN-FID	PIC X(09).	(Not used)
SHIPPING-COMPANY	PIC X(01).	(Not used)
DEALER-NUMBER	PIC X(05).	(Not used)
FILLER	PIC X(01).	(Not used)
DEALER-ADDRESS	BLOCK (35/2).	OPTIONAL, used for a "mail-to" address only.
BLOCK-TYPE	PIC X(02).	"35"
DEALER-NAME	BLOCK (35/1).	OPTIONAL FOR LO, used for a "mail-to" address only.
BLOCK-TYPE	PIC X(02).	"35"
BLOCK-SUBTYPE	PIC X(01).	"2"
BLOCK-LINENUM	PIC 9(02).	"01"
BLOCK-DATA	PIC X(61).	Up to 2 blocks 122 bytes defined below:
ADDRESS-LINE	PIC X(108).	Address AAMVA format (separated by @)
FILLER	PIC X(14)	Spaces
ERROR DESCRIPTION BLOCK.	BLOCK (99/2)	Added for replies if errors found.
BLOCK-TYPE	PIC X(02).	"99"
BLOCK-SUBTYPE	PIC X(01).	"2"
BLOCK-LINENUM	PIC 9(02).	"01"
BLOCK-AAMVA.		
ELEM-AAMVA-CODE	PIC X(06).	AAMVE Element code
AAMVA-TYPE	PIC X(01).	AAMVA Error type
FATAL-IND REDEFINES		
AAMVA-TYPE	PIC X(01).	
DATA-OCCUR	PIC X(02).	
MESSAGE-TEXT	PIC X(52).	Error message free form
UNI-BLOCK REDEFINES		
BLOCK-AAMVA		
UNI-CODE	PIC X(04).	
UNI-IND	PIC X(01).	
UNI-CODE-LAST-2	PIC X(02).	
UNI-MESSAGE-TEXT	PIC X(54).	
ERROR-BLOCK.		
SEGMENT REDEFINES		

SEGMENT		
BLOCK-TYPE	PIC X(02).	
BLOCK-SUBTYPE	PIC X(01).	
BLOCK-LINENUM	PIC 9(02).	
ELEMENT-NUMBER	PIC X(06).	
ERROR-TYPE	PIC X(01).	
DATA-OCCURRENCE	PIC X(02).	
MESSAGE-TEXT	PIC X(52).	

Response to Request paper Title

If there is an error, the complete LG message (above) with an error segment added will be returned. There will be no response (CA) reply.

If the Request Paper Title is successful, the reply will be the Reply (RO or CA) Message below:

Network Control	Block 00/0	
TRAN-CODE	PIC X(04).	(Not used)
MSG-LENGTH	PIC 9(04).	MSG length (132 for a CA message).
MSG-DESTINATION	PIC X(07).	AAMVA mailbox of Lender
MSG-ORIGIN	PIC X(07).	AAMVA mailbox of SCDMV
MSG-DATE	PIC X(06).	Processing date
MSG-TIME	PIC X(06).	Processing time
MSG-SEQUENCE-ID	PIC 9(04).	(No change)
APPL-ID	PIC X(02).	(No change)
MSG-TYPE	PIC X(02).	"CA"
SEG-SEQUENCE-NO	PIC 9(02).	(No change)
LAST-SEG-IND	PIC X(01).	(No change)
TEXT-BLOCKS-COUNT	PIC 9(02).	Number of blocks except for the NCB (1 for a CA message).
NETWORK-SESSION-IND	PIC X(01).	(No change)
TEST-PROD-IND	PIC X(01).	(No change)
TRANSMIT-MODE	PIC X(01).	(No change)
ERROR-CODE	PIC X(01).	(No change)
TRANS-ORIGINATOR	PIC X(07).	(No change)
NETWORK-STATUS	PIC X(02).	(No change)
APPL-STATUS	PIC X(01).	(No change)
FILLER	PIC X(05).	(Not used)
MESSAGE-EXCHANGE-CONTROL.	BLOCK (02/3)	No changes on the reply